

CLIENT:

Fishbeck
Michigan State University



Project: Subsurface Utility Locating

Prior to excavation as a part of a repair project in front of historic Spartan Stadium at Michigan State University, the engineering staff needed to locate all utilities. In addition, they needed to know the depths of the utility lines in order to avoid unnecessary mid project design changes and/or damages to existing utilities during the excavation process. After location and identification all utilities were to marked and transposed to engineering drawings provided by the client.

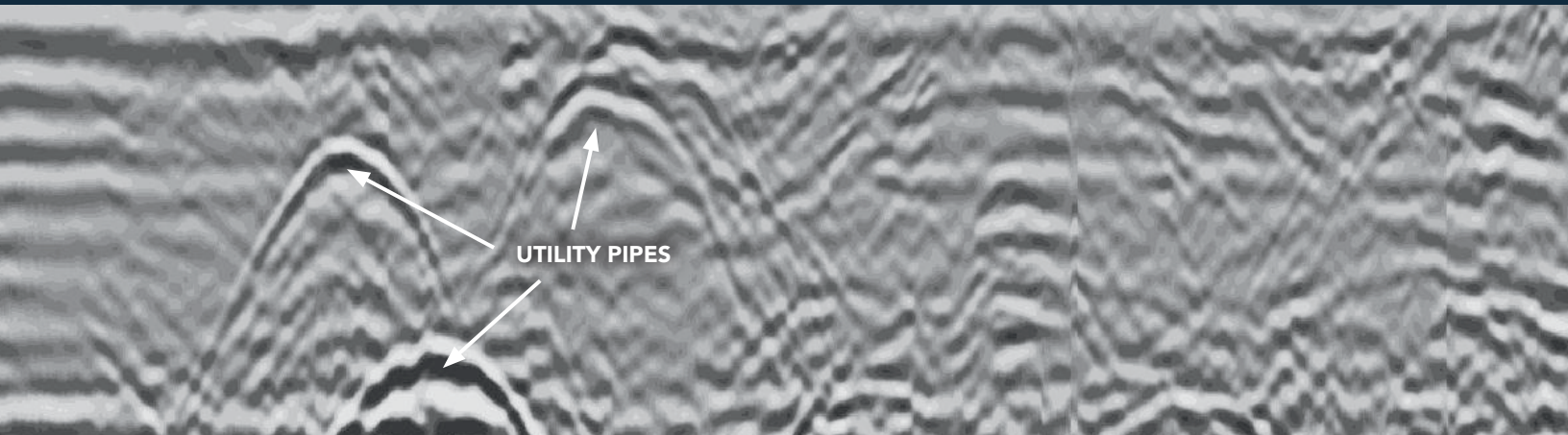


Plan

Diamond developed a plan to survey of subsurface ground by using Ground Penetrating Radar—GPR SIR 20 systems, with Radan software and onsite 3D capabilities.

Process

Over a 5 day period over 7000 linear feet of subsurface imaging was performed by a Diamond GPR technician. Using a 400 mHz antenna and radio frequency locating equipment Diamond Located and verified the depth all utilities in the scanned area.



Outcomes

By locating and verifying the depth of all utilities Diamond was able to deliver to Fishbeck engineers integrated mapping of all findings. According to John Lefevre, Fishbeck's project manager; "This is one of many projects for which we've used Diamond Subsurface Imaging, as always they provided the high level results that we've come to expect from them."

For over 50 years, Diamond Concrete Sawing has been at the forefront of the concrete sawing industry. As a "customer-first" company, Diamond provides a wide array of technologically advanced concrete sawing, demolition, and locating and ground penetrating radar (GPR) services to satisfy the needs of knowledgeable customers who demand immediate solutions within budget and on time.

For more information on how Diamond can meet your concrete sawing, demolition, and locating scanning needs, call 1.800.968.3745 or email info@diamondconcretesawing.com.