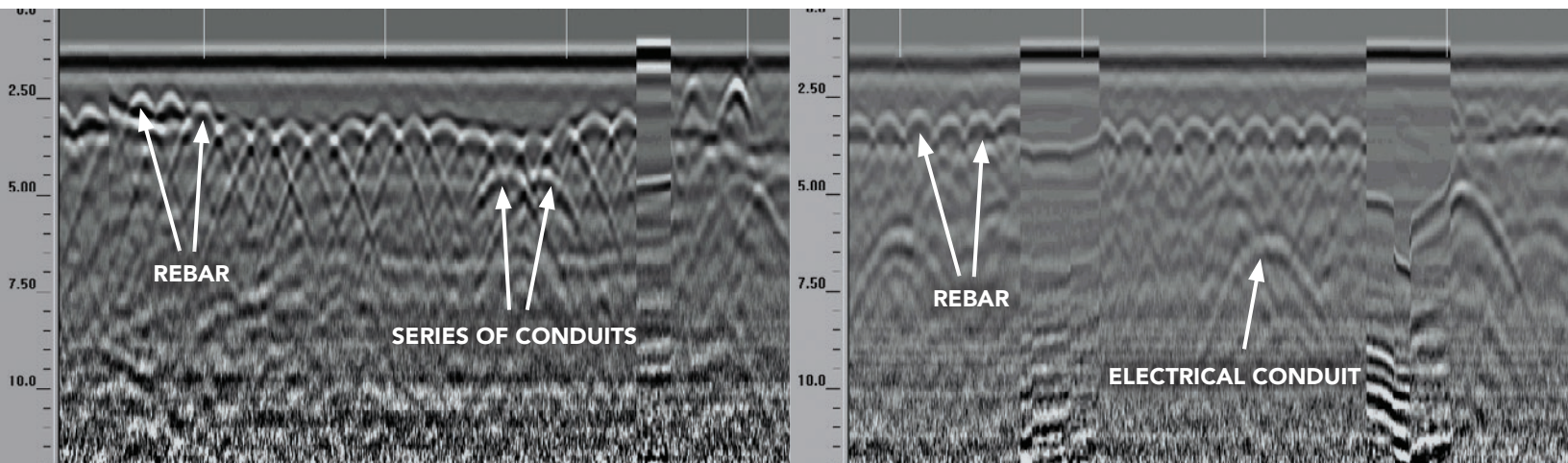


CLIENT:

American Electric Power

Project: Inside Wall & Floor Locating

American Electric Power's Cook Nuclear Plant, located in Bridgman, Michigan, needed to make repairs to prevent small groundwater leaks in the walls and floors throughout its Turbine Room, Screen House, and Auxiliary Buildings. To seal off the leaks, they planned to drill into the concrete walls and floors around the problem areas and fill the cracks with a special compound. However, because of safety requirements, all concrete needed to be imaged to locate all reinforcements and conduits before any drilling could take place.



Plan

Diamond developed a plan to survey and scan all problem locations throughout the site. The plan involved using a Ground-Penetrating Radar (GPR) SIR 20 system with Radan software and on-site 3D capabilities to map and show the location of all subsurface objects.

Process

Survey and verify the location of all reinforcement and utilities in the problem areas and map all findings to drawings for the team at Cook Nuclear. Using Ground Penetrating Radar would prevent the drills from making contact with rebar and conduit embedded in the concrete.

Outcomes

All maps and drawings developed for the Cook Nuclear Power Plan were completed to scale and submitted to the Plant's Engineering Department. By verifying and showing the exact location of all reinforcement and utilities in the problem areas, the Cook staff avoided making destructive contact with rebar and conduit embedded in the concrete during the repair process.

For over 50 years, Diamond Concrete Sawing has been at the forefront of the concrete sawing industry. As a "customer-first" company, Diamond provides a wide array of technologically advanced concrete sawing, demolition, and locating and ground penetrating radar (GPR) services to satisfy the needs of knowledgeable customers who demand immediate solutions within budget and on time.

For more information on how Diamond can meet your concrete sawing, demolition, and locating scanning needs, call 1.800.968.3745 or email info@diamondconcretesawing.com.